



**Take your
workshops to the
next level**

*Rooms with
a view*

The location with a view:

Welcome to our modern premises. Here, you'll find everything you need for productive meetings, seminars, and private conversations:

The facilities

- **Four rooms** with a total area of 170 square metres are at your disposal.
- **State-of-the-Art Technology:** Our rooms offer the latest interactive displays and conference systems to meet your technological requirements.
- **Stunning view over Vienna:** Enjoy the cityscape during your event.
- **Two kitchens:** Perfect for catering your event.
- **Lounge Area:** Relax during breaks or informal discussions.
- **Good connections & parking:** Easy accessibility and parking facilities for all participants.
- **Unique Location:** Our premises are situated close to parks and calming riverside areas, adding a special atmosphere to your event.
- **Green Courtyard:** Ideal for breaks, lunch, or creative meetings.
- **On-Site Canteen:** The Eurest Canteen offers a variety of sustainable meals daily, including vegetarian and vegan options, as well as a salad bar, snacks, and desserts.

*all info
in detail!*

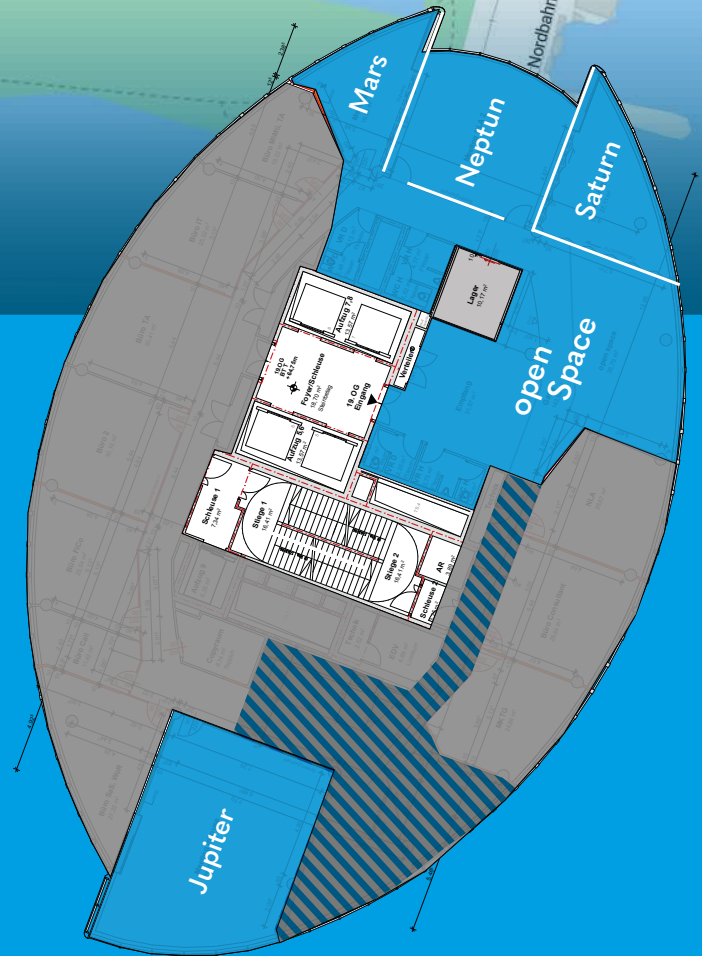
next
level consulting



Location and Map

Ideal transport connections:

- 10-minute walk to Floridsdorf station (U6, S1, S2, S3, S15)
- 5-minute walk to Matthäus-Jiszda-Straße station (bus 20B, 33B and tram 26, 31)
- 15 minutes to the city centre (by car or underground)
- Direct access from the Donauufer Highway A22 (exit Floridsdorferbrücke) to the on-site parking garage





Our largest room:
Jupiter

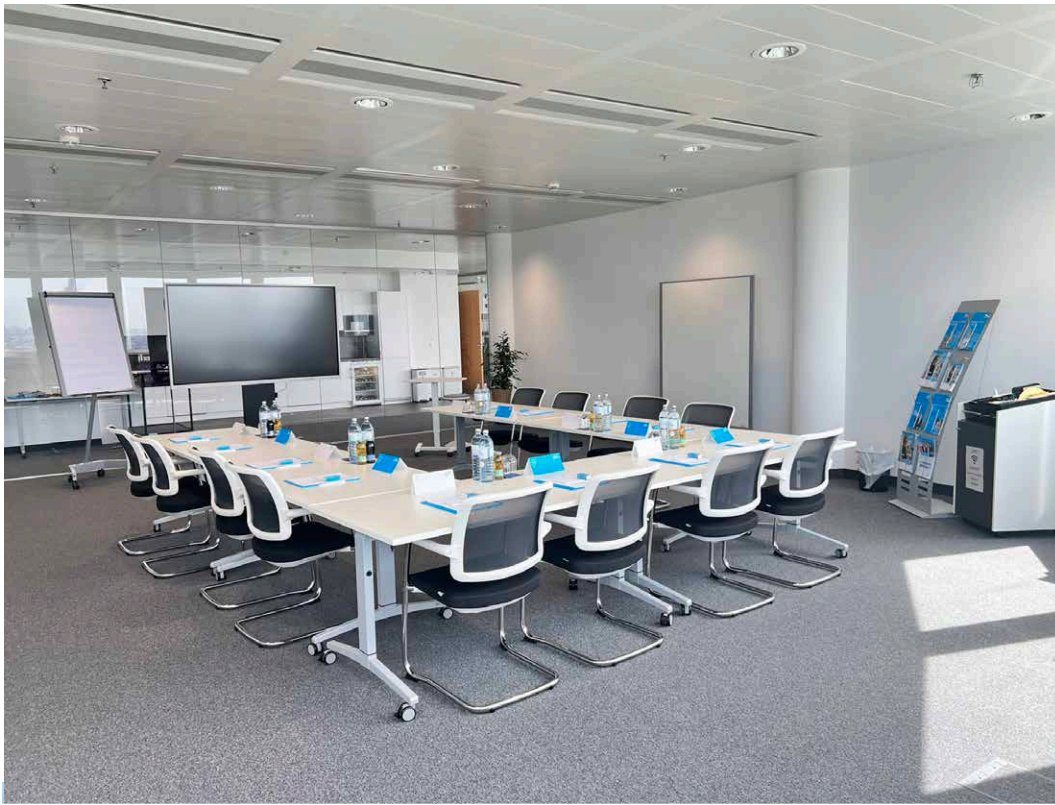
Room size:
74 m²

Furnishing options:

- **8 mobile seminar tables** (160 x 80 cm)
→ Expandable by 2 tables
- **16 seminar chairs**
→ Expandable by 4 chairs
- **1 standing desk**
for the trainer/speaker
- **1 standing stool**
for the trainer/speaker

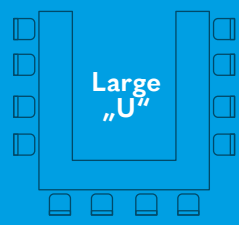
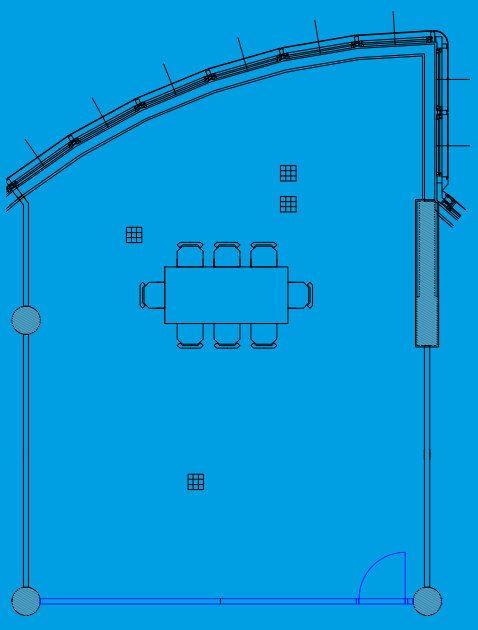
Technical equipment:

- Samsung Flip Pro 85-inch
- Joan 6 RE
- Whiteboard film
- Screen/greenscreen combination
- 1 Modstation:
 - Kandao Meeting Pro
 - Power strip with 3 + 6 sockets
 - 2x USB-C charging cables
 - USB-C to HDMI adapter
 - Long HDMI cable
 - Long USB-C cable



Jupiter

Floor plan and a selection of seating arrangements:





Meetings with a view:

Neptune


Room size:
48 m²

Furnishing options:

- **5 mobile seminar tables** (160 x 80 cm)
→ Expandable by 2 tables
- **10 seminar chairs**
→ Expandable by 4 chairs
- **1 standing desk**
for the trainer/speaker
- **1 standing stool**
for the trainer/speaker

Technical equipment:

- Samsung Flip Pro 65-inch
- Airserver / Microsoft Wireless Adapter
- Joan 6 RE
- 1 Modstation:
Kandao Meeting Pro
Power strip with 3 + 6 sockets
2x USB-C charging cables
USB-C to HDMI adapter
Long HDMI cable



**This room is all
about creativity:
Saturn**

Room size:
27 m²

Furnishing:

- 1 mobile design-thinking standing table
- 6 Highchairs
- 1 standing desk for the trainer/speaker
- 1 standing stool for the trainer/speaker

Technical equipment:

- Samsung Flip Pro 50-inch
- Joan 6 RE
- 1 DT-Whiteboard
- 2 DT-Toolracks
- 1 Modstation:
 - Kandao Meeting Pro
 - Power strip with 6 sockets
 - 2x USB-C charging cables
 - USB-C to HDMI adapter
 - Long HDMI cable

*Can be connected
with Neptune!*



Privacy:

Mars

Room size:
20 m²

When you need a more discreet setting –
the perfect room for personal conversations.

Furnishing:

- 2 mobile seminar tables (140 x 70 cm)
- 4 seminar chairs

Technical equipment:

- Samsung 65-inch television
- Airserver / Microsoft Wireless Adapter
- Joan 6 RE

*Can be connected
with **Neptune!***



Open

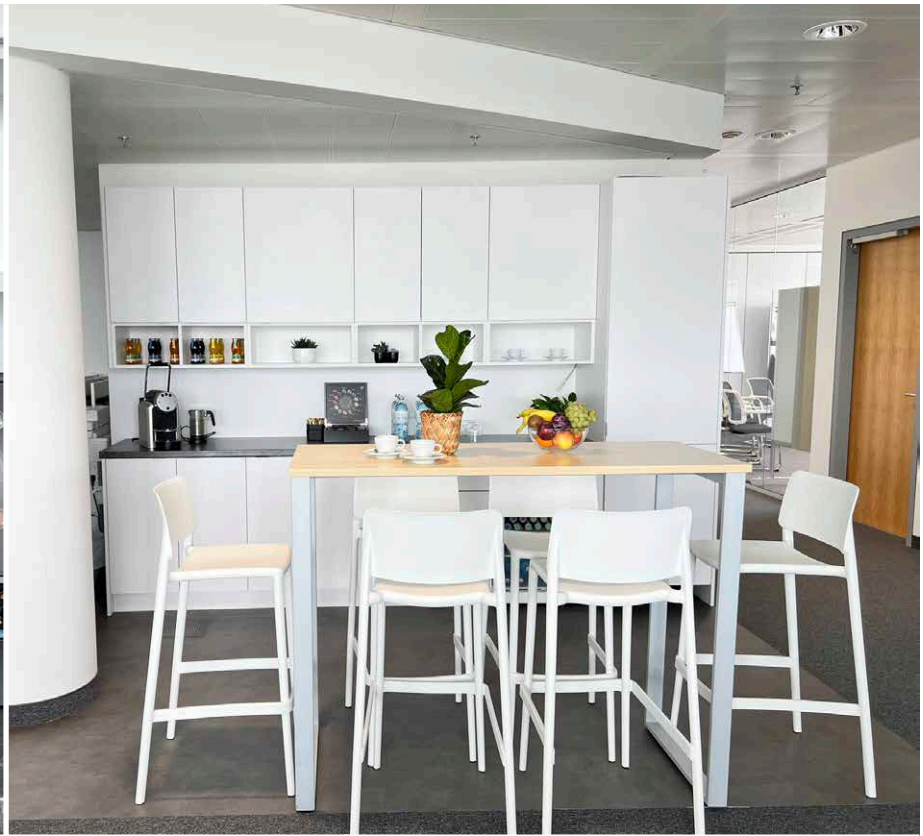
Space

Room size:
39m²

Our modern open space area offers the perfect blend of a relaxed atmosphere and productive interaction during your event. With an impressive view over the entire city of Vienna, the space invites you to fully enjoy your breaks.

Whether networking or taking a moment of peace – this area creates the ideal environment for inspiring conversations and restful breaks. Enjoy a cup of coffee or tea from our Nespresso machine while taking in the unique view.

Use the space to exchange ideas, make new connections, or simply unwind. The open space area is included in the room rental as well as the conference package and can be used throughout the event.



Room rental:

Jupiter	Neptune	Saturn	Mars
74 m ²	48 m ²	27 m ²	20 m ²
16 Pax	10 Pax	6 Pax	4 Pax
300 € / day ¹⁾	250 € / day ^{2) 4)}	150 € / day ³⁾	100 € / day

Can be connected with Neptune!

Can be connected with Neptune!

Half-day rentals also available upon request!

all prices excl. VAT.

- ¹⁾ For the room Jupiter, a rental fee will be charged in addition to the conference package if the number of attendees is less than 10.
- ²⁾ For the room Neptune, a rental fee will be charged in addition to the conference package if the number of attendees is less than 8.
- ³⁾ For the room Saturn, a rental fee will be charged in addition to the conference package if the number of attendees is less than 5.
- ⁴⁾ If the room Neptune is expanded to include Saturn and Mars, an additional rental fee of €250 per day will apply.

next level Worry-Free Package

A comprehensive package for successful conferences, including everything you need to focus on what truly matters.

> Unlimited beverage selection

Enjoy a variety of beverages during your conference, including premium coffee, aromatic tea, refreshing mineral water, and a selection of fruit juices.

> Culinary lunch

Relax during the lunch break and indulge in delicious meals.

> Snacks and sandwiches

Keep your energy up with a variety of delicious snacks and sandwiches. From sweet to savoury, we have something for every taste.

> Fresh fruit and vegetables

Recharge with a selection of fresh fruit and vegetables available throughout the day.

> Technology and equipment

Take advantage of our state-of-the-art technology and equipment, including projectors, screens, audio and video devices, to ensure your presentations and discussions run smoothly and effectively. Additionally, IT support is available throughout the event to ensure all technical needs are met without any issues.

Total: €80 per person*

next level Classic Package

> Unlimited beverage selection

Enjoy a variety of beverages during your conference, including premium coffee, aromatic tea, refreshing mineral water, and a selection of fruit juices.

> Culinary lunch

Relax during the lunch break and indulge in delicious meals.

> Fresh fruit and vegetables

Recharge with a selection of fresh fruit and vegetables available throughout the day.

> Technology and equipment

Take advantage of our state-of-the-art technology and equipment, including projectors, screens, audio and video devices, to ensure your presentations and discussions run smoothly and effectively. Additionally, IT support is available throughout the event to ensure all technical needs are met without any issues.

Total: €60 per person*

next level Basic Package

> Unlimited beverage selection

Enjoy a variety of beverages during your conference, including premium coffee, aromatic tea, refreshing mineral water, and a selection of fruit juices.

> Snacks and sandwiches

Keep your energy up with a variety of delicious snacks and sandwiches. From sweet to savoury, we have something for every taste.

> Fresh fruit and vegetables

Recharge with a selection of fresh fruit and vegetables available throughout the day.

> Technology and equipment

Take advantage of our state-of-the-art technology and equipment, including projectors, screens, audio and video devices, to ensure your presentations and discussions run smoothly and effectively. Additionally, IT support is available throughout the event to ensure all technical needs are met without any issues.

Total: €50 per person*

* all prices excl. VAT.

Cancellations and postponements:

For cancellations or withdrawals 3 months before the event

- > Up to 8 weeks before the event: 25% of the total amount
- > Up to 2 weeks before the event: 50% of the total amount
- > Up to 8 days before the event: 75% of the total amount
- > After that: 90% of the total amount

Processing fee € 50.-

Terms of payment / Bank details:

Payable within 14 days net without deduction
Erste Bank der oesterreichischen Sparkassen AG,
Sort Code 20111 | Account No.: 30001048095
Swift-Code: GIBAATWWXXX | IBAN: AT922011130001048095



Our commitment: Sustainability

We are delighted to welcome you and encourage you to join us in our efforts to protect the environment. When planning our offerings, we placed special emphasis on sustainability.

- > **Water bottles:** We offer fresh mineral water in glass bottles. Please help us reduce waste by fully consuming your bottle during the event. Glass bottles are an eco-friendly alternative to plastic and can be efficiently cleaned and reused.
- > **Catering:** Our catering includes organically grown products and vegetarian options. The lunch buffet in the „Eurest“ cafeteria offers a selection of dishes prepared from sustainably sourced ingredients. Enjoy fresh fruit and healthy snacks that are good for both your body and our planet.
- > **Materials:** We largely avoid printed materials. All relevant information and documents are provided digitally. We encourage you to take digital notes and to use the option of storing documents on your devices.

Through these actions, we collectively contribute to the responsible use of our resources and make a strong statement about the importance of sustainability in all aspects of our lives.



Indoor & Outdoor

Make use of the garden and lobby for group exercises!

The nearby water park, just a 5-minute walk away, offers the perfect setting for group exercises, relaxing walks or simply to get some fresh air. Use the green oasis to recharge your batteries and clear your head during your event.

we look forward to welcoming you!



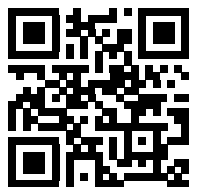
For bookings and further information,
please contact your representative:

Hatice Bastürk

Banquet Office

+43 676 840 808 455

bankett@nextlevelconsulting.com





next level consulting – get connected!

Austin

12301 Research Boulevard, Building 5
Suite 101, Austin, Texas 78759
T +1 512 9861913
office-austin@nextlevelconsulting.com

Berlin

Design Offices Berlin, Leipziger Platz 16
10117 Berlin, Germany
T +49 228 289 26-0
office-berlin@nextlevelconsulting.com

Bratislava

K Iomu 1
811 04 Bratislava, Slovakia
T +421 2 44647111
office-bratislava@nextlevelconsulting.com

Cape Town

25 van Ryn Street, Constantia 7806
Cape Town, South Africa
T +27 21 823 5123
office-capetown@nextlevelconsulting.com

Cologne

Design Office Mediapark, Erftrasse 15-17
50672 Cologne, Germany
T +49 228 289 26-0
office@nextlevelconsulting.com

Munich

Nymphenburgerstrasse 4
80335 Munich, Germany
T +49 89 36055166
office-muenchen@nextlevelconsulting.com

Salzburg

Warwitzstrasse 9
5023 Salzburg, Austria
T +43 664 558 6925
office@nextlevelconsulting.com

Singapore

8 Eu Tong Sen Street #14-94
Singapore 059818, Singapore
T +65 3159 1491
office-singapore@nextlevelconsulting.com

St. Gallen

St. Leonhardstrasse 45
9000 St. Gallen, Switzerland
T +41 41 740 0455
office-schweiz@nextlevelconsulting.com

Vienna

Floridsdorfer Hauptstrasse 1
1210 Vienna, Austria
T +43 1 4780660-0
office@nextlevelconsulting.com

www.nextlevelconsulting.com
office@nextlevelconsulting.com

